

Ormiston Academies Trust

## Ormiston Victory Academy Admissions policy

### Policy version control

Policy type	Mandatory OAT policy
Author	Sharon Warmington, Interim Head of Governance (until May 2023) Sunita Yardley-Patel, Head of Governance
In consultation with	Stone King
Approved by	Trust Board, 9 March 2023
Next release date	December 2023
Description of changes	<p>This policy has been totally reviewed and updated by StoneKing, with specific/key changes listed below for reference:</p> <ul style="list-style-type: none"> <li>▪ 1.1.4 - OAT being the admissions authority</li> <li>▪ 2.8.2 - Multiple births in the same year group ie twins</li> <li>▪ 2.9 - Eligibility criteria</li> <li>▪ 2.11.1 – Withdrawing a place/offer</li> <li>▪ 2.12 – Determining arrangements and consultation</li> <li>▪ 2.13 - Admissions outside normal age group</li> <li>▪ 2.14 – Complaints about admissions arrangements</li> <li>▪ 3 – Secondary admissions (all sections)</li> <li>▪ 4 – Sixth form admissions (all sections)</li> </ul>

# Contents

<b>1. Policy statement and principles.....</b>	<b>3</b>
1.1. Policy aims and principles.....	3
1.2. Monitoring and review.....	3
<b>2. Academy admissions.....</b>	<b>3</b>
2.3. Definitions.....	4
2.4. Distance.....	4
2.5. Dual address.....	4
2.6. Catchment area.....	4
2.7. Feeder schools.....	5
2.8. Siblings.....	5
2.9. Eligibility criteria.....	5
2.10. Waiting list.....	5
2.11. Withdrawal of a place.....	5
2.12. Determining arrangements and consultation.....	6
2.13. Admission of children outside their normal age group.....	6
2.14. Complaints about admissions arrangements.....	7
<b>3. Secondary admissions.....</b>	<b>7</b>
3.1. Number of spaces (PAN).....	7
3.2. Application process.....	7
3.3. Admissions criteria.....	8
3.4. Oversubscription criteria.....	8
3.5. In-year admissions.....	9
3.6. Unsuccessful applications.....	9
<b>4. Sixth form admissions.....</b>	<b>10</b>
4.1. Number of spaces.....	10
4.2. Application process.....	10
4.3. Selection criteria.....	11
4.4. Oversubscription criteria.....	11
4.5. In-year admissions.....	12
4.6. Unsuccessful applications.....	12

# 1. Policy statement and principles

## 1.1. Policy aims and principles

- 1.1.1. This policy is designed to ensure there is an open and fair admissions procedure for all applicants and to help guide parents and their children through the application process. The academy's admissions arrangements will not disadvantage unfairly, either directly or indirectly, a child from a particular social or racial group, or a child with a disability or special educational needs, and that other academy policies do not discourage parents from applying for a place for their child.
- 1.1.2. This policy details the academy's arrangements for admissions and will apply to all admissions for the academic year 2025/2026. This includes in-year admissions within this period.
- 1.1.3. Parents are encouraged to visit the academy with their child if they are planning to apply for a place. We have a number of open days during the year, these will be publicized on our website. Arrangements for visits outside these dates can be made through the Principal's PA – details on the academy website.
- 1.1.4. Ormiston Academies Trust (OAT) is the admissions authority and will consult on the admissions arrangements at least once every seven years, or if there are proposed changes to the admission arrangements which require consultation.
- 1.1.5. As the admission authority, OAT delegates the workings of the admissions process to the academy.
- 1.1.6. This policy is consistent with all other policies adopted by OAT/the academy and is written in line with current legislation and guidance.

## 1.2. Monitoring and review

- 1.2.1. This policy will be reviewed annually or in the following circumstances:
- Changes in legislation and/or government guidance
  - As a result of a major change in circumstances
  - As the result of a decision of an Adjudicator
- 1.2.2. If there are urgent concerns these should be raised to the Principal in the first instance.

# 2. Academy admissions

- 2.1. The academy admits children between the ages of 11 – 18. The main intakes are:
- Secondary
  - Sixth form
- 2.2. We encourage entry at the academy's main intake time so as to aid academic progression without interruption, however, applications are welcome for entry in any year.

## 2.3. Definitions

2.3.1. The academy uses the following definitions when applying this policy:

### 2.4. Distance

2.4.1. This is the straight-line distance between the academy's main gate and the child's home address (front door).

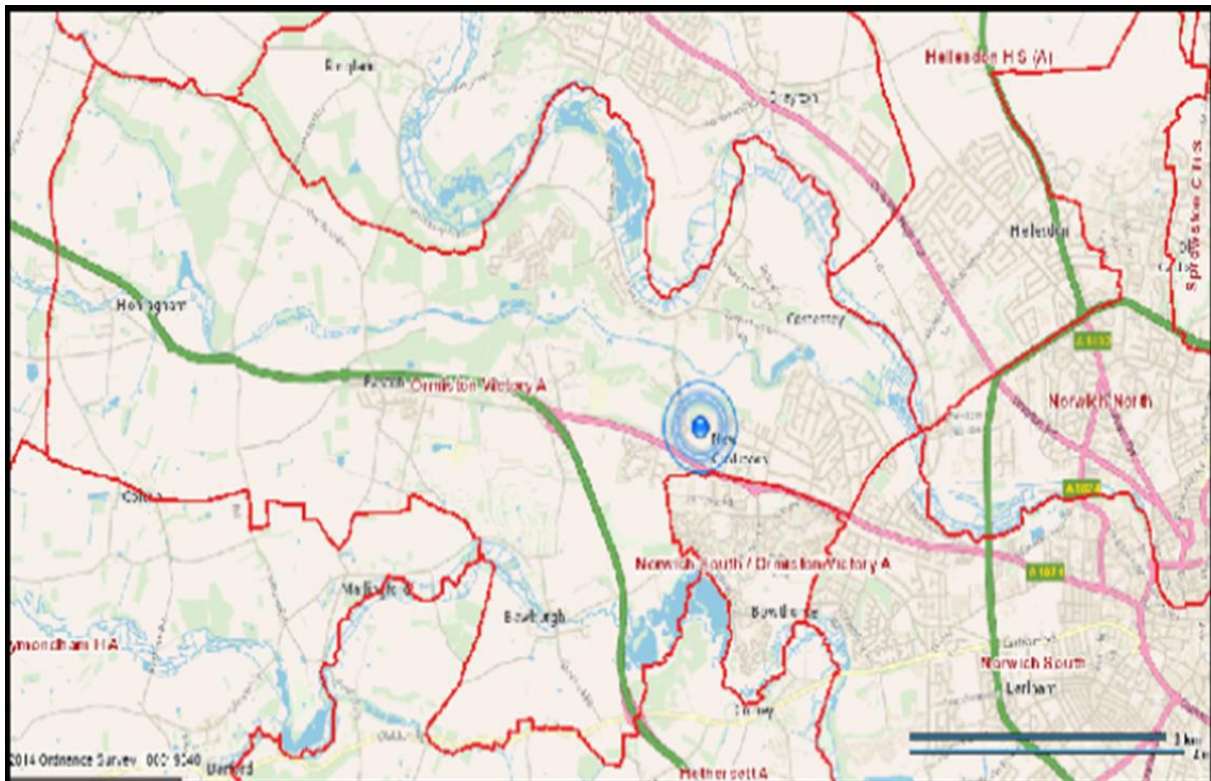
2.4.2. The measuring system used is the LA computerized system for ordinary admissions. Where two dwellings have the same front entrance, the closest dwelling to the front door (lower floor and counting clockwise) will be regarded as being closer to the academy.

### 2.5. Dual address

2.5.1. Where a child lives at two different addresses, the 'home' address will be determined as the address at which the child resides for the majority of school nights. School nights are Sunday night to Thursday night inclusive. In a case where the child spends an equal number of school nights at each address, then the address where the child benefit is paid will be used. Where no child benefit is claimed, the address used to register the child with a doctor will be used.

### 2.6. Catchment area

2.6.1. See map below



## 2.7. Feeder schools

2.7.1. Please see below

- Costessey Junior School
- Bawburgh Primary School
- St Augustine's Primary School
- Queens Hill Primary School
- Easton St Peter's Primary School
- St Michael's Junior School

## 2.8. Siblings

2.8.1. A sibling is defined as:

- A brother or sister (including half brothers or sisters) who shares one or both parents, whether or not resident in the same household
- A step-brother or sister where the two children are related by a parent's marriage
- An adopted or foster child living in the same household under the terms of the resident's order
- Another child living in the same household where the adult has parental responsibility

2.8.2. In the case of twins or other children from multiple births (two or more siblings in one year group) and where only one place is available, the application will be considered together as one application and for a relevant year group the Published Admissions Number (PAN) will be increased accordingly.

## 2.9. Eligibility criteria

2.9.1. Entry to the academy is subject to the regulations regarding nationality, residency status and eligibility to study in the United Kingdom.

## 2.10. Waiting list

2.10.1. If the number of applicants exceeds the number of places available, children who have been refused a place will be automatically placed on a waiting list unless there is a specific request that this should not happen. The child may gain entry to the academy if a place becomes available.

2.10.2. The academy will maintain a waiting list until 31 December 2025 following the main academy intake. Each added child will require the list to be ranked again in line with the academy's oversubscription criteria in which the application was originally considered. Priority will not be given to children based on the date their application was received, or the date when they were added to the list.

## 2.11. Withdrawal of a place

2.11.1. The academy will only withdraw an offer of a place if:

- The place was offered in error
- Acceptance of the place was not received in a reasonable period of time

- The offer was obtained through a fraudulent or intentionally misleading application (the academy may request evidence to ensure the child meets the admissions criteria) – if the offer is withdrawn on the basis of misleading information the application will be considered afresh and a right of appeal offered if an offer is refused
- 2.11.2. The academy will not withdraw the place if the student has started at the academy unless the place was obtained fraudulently. If this is the case, then the academy will decide whether to withdraw the place based on the circumstances, including the length of time the child has been at the academy.

## 2.12. Determining arrangements and consultation

- 2.12.1. Admissions arrangements will be determined annually by the academy's local governing body (LGB), this will happen even if there are no changes from previous years and a consultation is not required.
- 2.12.2. If the academy changes any significant aspect of the admissions procedure, then the OAT Board will be informed prior to making changes and prior to the beginning of the consultation process. Any significant changes proposed by the academy must be approved by the OAT Board.
- 2.12.3. The academy will consult on admissions arrangements when changes to the academy's arrangements are proposed (no consultation is required for an increase in PAN or changes to ensure compliance with the admissions regulations). Where the admission arrangements have not changed from the previous year, there is no requirement to consult, subject to the requirement that we must consult on our admission arrangements at least once every seven years, even if there have been no changes during that period.
- 2.12.4. The academy will publish any consultation for admissions on its website and notify appropriate stakeholders. If there are any substantive responses to the academy's consultation, then these will be sent to the OAT Board. Any subsequent changes will be made in consultation with the OAT Board.
- 2.12.5. Once the academy's admissions arrangements have been determined it will notify the appropriate bodies and publish a copy of the determined arrangements on its website.

## 2.13. Admission of children outside their normal age group

- 2.13.1. Parents may seek a place for their child outside their normal age group, for example, if the child is gifted and talented or has experienced problems such as ill health. If parents wish to do this they must contact, in the first instance, the Admissions Manager on: [pa@ormistonvictoryacademy.co.uk](mailto:pa@ormistonvictoryacademy.co.uk). Contact with the academy must be made at the earliest opportunity to avoid any delays in the application process.
- 2.13.2. The decision whether a child is admitted outside of their normal age group will be made on a case-by-case basis by the academy's LGB and any decision will be in the best interests of the child concerned. A panel of at least three governors will consider the admission request based on:
- The child's academic development
  - The child's social and emotional development

- Views of the parents and principal
- Medical history and/or views of a medical professional, where relevant; and
- Any additional relevant information available

2.13.3. The panel will have to be satisfied that the child would be able to cope with the work of the year applied for **and** that the child would be able to cope with the personal development whilst being with a year group who are of a different age. In order to support any application, parents will need to submit evidence to demonstrate that the admission into a different year group is in the best interests of the child.

2.13.4. Once the LGB has made a decision, the parent can then apply for admission of their child to the academy using the process detailed in this policy. Where no place is offered, parents have a statutory right to appeal against the refusal of a place, however this right does not apply if the child is offered a place at the academy even if it is not in their preferred age group.

## 2.14. Complaints about admissions arrangements

2.14.1. Any person, or body, can make an objection to the Schools Adjudicator when they consider the academy's arrangements are unlawful, or not in compliance with the School Admissions Code/relevant legislation relating to admissions. The deadline for any such complaint is 15 May in the year before the arrangements are to apply.

2.14.2. Complaints about the appeals panel can be made to the Secretary of State.

## 3. Secondary admissions

The process detailed in this section is for admissions for secondary admissions. For further information on this process please contact the Principal's PA on: [PA@ormistonvictoryacademy.co.uk](mailto:PA@ormistonvictoryacademy.co.uk)

### 3.1. Number of spaces (PAN)

3.1.1. The academy has a PAN of 300 for admission to Year 7.

### 3.2. Application process

3.2.1. Applications for the 2025/26 academic year begins 11 September 2024.

3.2.2. To apply you need to complete the Norfolk County Council's (NCC) Common Application Form (CAF)<sup>1</sup> and submit this directly to the NCC by the deadline, 31 October 2024.

More information can be found on the NCC Website:-

[http://www.norfolk.gov.uk/Childrens\\_services/Schools/School\\_admissions/index.htm](http://www.norfolk.gov.uk/Childrens_services/Schools/School_admissions/index.htm)

#### Important Dates

- **11 September 2024** – Admission round opens. Letters and application forms distributed to schools and given to Year 6 pupils

- **31 October 2024** – All applications must be received by NCC by this date
- **03 February 2025** – Coordination scheme applied. No changes can be made to applications after this date
- **03 March 2025** – Offer day. Parents sent letter, telling them at which school their child has been offered a place. Parents applying online will receive an email with the information. Parents will also be able to access their account at [www.admissionsonline.norfolk.gov.uk](http://www.admissionsonline.norfolk.gov.uk)
- **28 March 2025** – closing date for appeals and late applications
- **03 April 2025** – Mini admission round. All late applications are considered on this date
- **May/June 2025** – Appeal hearings
- **31 December 2025** – All waiting lists cease to be held

3.2.3. Late applications will not be considered until all other applications have been reviewed.

3.2.4. All offers of secondary places will be made through the LA. The academy will not contact parents about the outcome of their application until the offer from the LA has been received. All offers will be made on the secondary national offer day (1 March or the next working day).

### 3.3. Admissions criteria

3.3.1. If the number of applications is less than the number of spaces, then all children will be offered places.

3.3.2. Where a child has an Education Health and Care Plan (EHCP) which names the academy, that child will be admitted and the number of available places reduced accordingly.

### 3.4. Oversubscription criteria

3.4.1. Where the academy receives more applications than there are places available, priority for admission will be given to those children who meet the oversubscription criteria set out below.

- Looked after children and Previously Looked After Children. including those who appear to the academy to have been in state care outside of England and ceased to be so as a result of being adopted<sup>2</sup>. A Looked After Child is either a child who is in the care of a local authority, or being provided with accommodation by a local authority in the exercise of their social services functions (definition used is in Section 22(1) of the Children Act 1989) Previously Looked After Children are those who were looked after but ceased to be so because they were adopted or became subject to a child arrangements order or special guardianship order immediately following having been looked after.
- Children with a sibling, as defined in 2.8 above, already at the academy at the time of admission including Sixth Form where they have attended Year 11.
- Children of staff as detailed:

---

<sup>2</sup> A child is regarded as having been in state care outside of England if they were in the care of or were accommodated by a public authority, a religious organisation, or any other provider of care whose sole or main purpose is to benefit society.



- a. Where the staff member has been employed at the academy for 2 or more years at the time which the application for admission to the academy was made.
  - b. The staff member is recruited to fill a vacant post for which there is a demonstrable skill shortage
  - Children in the catchment as detailed in the following order:
    - a. Children in the academy catchment area attending a named feeder school.
    - b. Children in the academy catchment area.
  - Distance will be used as the last criterion for families who don't fit into the above
- 3.4.2. If there are not enough places to satisfy all applications under any one criterion, priority will be given in accordance with proximity to the academy as per criterion. Where two or more applicants live an equal distance from the academy and it is not possible to differentiate between them, priority will be determined by a random allocation process. This process will be independently verified by someone independent of the academy and OAT.

### 3.5. In-year admissions

- 3.5.1. Applications for in-year admissions are accepted and will be processed on a case-by-case basis in accordance with these published admission arrangements. In-year admissions forms can be obtained from Norfolk County Council. The LA co-ordinates the academy's in-year admissions, and any application for an in-year admission will need to be made through the LA.
- 3.5.2. The academy will participate in the LA's Fair Access Protocol. Children included in the Fair Access Protocol will take precedence over those held on the waiting list. Once a child has been identified for admission to the academy under the Fair Access Protocol, the academy will notify the local authority within seven calendar days of the decision to accept or refuse the child's admission.
- 3.5.3. If the academy refuses entry, the local authority may request a direction from the Secretary of State. The decision of the Secretary of State will be binding upon the academy.

### 3.6. Unsuccessful applications

- 3.6.1. The academy will inform the child's parents if a decision has been made to refuse their child a place at the academy for which they have applied, this will include the reason why admission was refused, information about the right to appeal, deadlines and contact details. Any appeal is before an independent admissions appeal panel.
- 3.6.2. A timetable for organising and hearing appeals will be set and published on the academy's website by 28 February each year for the normal admissions round. The academy will inform OAT's Head of Governance of any admissions appeals.
- 3.6.3. A child is allowed to be on the academy waiting list while an appeal is lodged, and the appeal will not affect their position on the list. The decision of the appeals panel is binding on the academy.

## 4. Sixth form admissions

The process detailed in this section is for admissions to the sixth form. For further information on this process please contact the Head of Sixth Form on [sixthform@ormistonvictoryacademy.co.uk](mailto:sixthform@ormistonvictoryacademy.co.uk)

The prospectus will be published during the Autumn Term each year. All current Ormiston Victory Academy students will be invited to an open event and the event will be marketed locally and on the school website to encourage external candidates. They will be specifically issued to:

- All current Year 11 students
- Students visiting from other educational establishments
- Those making specific requests by contacting the academy

### 4.1. Number of spaces

4.1.1. The academy has a PAN of up to 300 applicants per year, which includes internal and external.

### 4.2. Application process

4.2.1. Applications for the 2025/26 academic year begins on 1<sup>st</sup> October 2024. The closing date for applications for this year is 31<sup>st</sup> July 2025.

4.2.2. To apply you need to complete the application form through Help You Choose or Google Forms.

#### Help You Chose:

<https://www.helpyouchoose.org/courses/full-time-courses?provider=ormiston-victory-academy>

#### Google Form:

[https://docs.google.com/a/ormistonvictoryacademy.co.uk/forms/d/e/1FAIpQLSfZrPg8INsoS2M8KngshiD\\_ZWfv8ssGYxGCmCQYhDGeH7C31A/viewform?c=0&w=1](https://docs.google.com/a/ormistonvictoryacademy.co.uk/forms/d/e/1FAIpQLSfZrPg8INsoS2M8KngshiD_ZWfv8ssGYxGCmCQYhDGeH7C31A/viewform?c=0&w=1)

Please apply through either of these websites. Alternatively, you may download a copy of the application form from our website or by contacting the academy. Please email completed application forms to [sixthform@ormistonvictoryacademy.co.uk](mailto:sixthform@ormistonvictoryacademy.co.uk).

The application process is the same for existing academy students and for those who are transferring from another school/academy.

Information, advice and guidance meetings/interviews are set up for every prospective Sixth Form student, with their parents, to provide expert professional support at a critical time of decision.

Students who do not meet the entry criteria can discuss the courses that they want to follow with the Assistant Principal responsible for Sixth Form and may be given permission to join in exceptional circumstances.

Offer letters are sent out within 14 days of the scheduled meeting taken place. The offer maybe conditional or unconditional, depending on the course.

- 4.2.3. Late applications will only be considered where there is a surplus of places in the academy/course(s) applied for once the oversubscription criteria has been applied.
- 4.2.4. Admission, where successful, is to the Sixth Form, not to a guaranteed specific course of study.

### 4.3. Selection criteria

- 4.3.1. Your choice of Sixth Form is an important one and we want to make sure we get it right for you. We have high expectations and it is essential that you choose the right courses to enable you to succeed. You should therefore refer to the entry requirements for both the level of qualification and each individual subject. Where you do not meet the requirements, but feel that there are good reasons why you should be allowed on the course; please feel free to discuss this with one of the Sixth Form team

All internal candidates seeking transfer to our sixth form, and all external candidates seeking admission to the our sixth form, will need to have the same minimum academic qualifications for entry, which are:

#### **Level 3 Academic Entry Requirements**

In order to follow an academic Level 3 programme of study you should have achieved five or more GCSE (or equivalent) Grade 5's or above, including English\* and mathematics. In addition, you should have achieved the minimum GCSE grade required by the academy to study for the individual subjects of your choice. To see the minimum grades requirement please go to our website <http://www.ormistonvictoryacademy.co.uk/lord-nelson-sixth-form/applications/>

#### **Level 3 Vocational Entry Requirements**

In order to follow a vocational or mixed Level 3 programme of study you should have achieved five or more GCSE (or equivalent) Grade 4s or above, including English\* and mathematics. Those students without a grade 4 or above in English or mathematics, will take a level 2 qualification in these as part of their studies. In addition, you should have achieved the minimum GCSE grade required by the academy to study for the individual subjects of your choice. To see the minimum grades requirement please go to our website <http://www.ormistonvictoryacademy.co.uk/lord-nelson-sixth-form/applications/>

\* Please use the highest grade from either English language or English literature.

### 4.4. Oversubscription criteria

- 4.4.1. If the academy receives more applications that meet the selection criteria above than there are available places, priority for admission for external applicants will be in line with the oversubscription criteria set out below:
  - Looked after children and Previously Looked After Children including those students who appear to the academy to have been in state care outside of

England and ceased to be in state care as a result of being adopted.<sup>3</sup> A Looked After Child is either a child who is in the care of a local authority, or being provided with accommodation by a local authority in the exercise of their social services functions (definition used is in Section 22(1) of the Children Act 1989). Previously Looked After Children are those who were looked after but ceased to be so because they were adopted or became subject to a child arrangements order or special guardianship order immediately following having been looked after.

- Children with a sibling, as defined in 2.1 above, already at the academy at the time of admission including Sixth Form where they have attended Year 11.
- Children of staff as detailed:
  - a. Where the staff member has been employed at the academy for 2 or more years at the time which the application for admission to the academy was made.
  - b. The staff member is recruited to fill a vacant post for which there is a demonstrable skill shortage
- Children in the academy catchment area.
- Distance will be used as the last criterion for families who don't fit into the above

#### 4.5. In-year admissions

- 4.5.1. Applications for in-year admissions are accepted and will be processed on a case by case basis in accordance with these published admission arrangements. We will also consider whether it is appropriate to place a student in the class late based on the learning that has been missed. If the student is transferring from another sixth form and was doing an equivalent course this will be taken into account in deciding whether a place can be offered.
- 4.5.2. In-year admissions forms can be obtained from Sixth Form, please arrange a meeting by contacting [sixthform@ormistonvictoryacademy.co.uk](mailto:sixthform@ormistonvictoryacademy.co.uk)
- 4.5.3. If the academy refuses entry, the local authority may request a direction from the Secretary of State. The decision of the Secretary of State will be binding upon the academy.

#### 4.6. Unsuccessful applications

- 4.6.1. The academy will inform the student and the applicant's parent if a decision has been made to refuse the offer of a place at the academy for which they have applied, this will include the reason why admission was refused, information about the right to appeal, deadlines and contact details.
- 4.6.2. For sixth form applications both the student and the parents have a right of appeal against a decision to refuse an offer of a place. Any appeal is before an independent admissions appeal panel.

---

<sup>3</sup> A child is regarded as having been in state care outside of England if they were in the care of or were accommodated by a public authority, a religious organisation, or any other provider of care whose sole or main purpose is to benefit society.