

Performing Arts Key Stage 3 Road Map

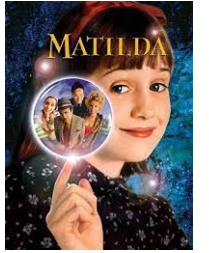


Autumn 1 & 2 - 'Dancing Through the Decades' Studying key dance styles through time - 1920's Charleston, 1970's Disco and 1990's Hip Hop.

Spring 1 - Introduction to Theatre - Greek Theatre including chorus and mask work

Spring 2 - Silent Movies (slapstick comedy & melodrama)

Summer 1 - Matilda Characterisation and script work.



7



Summer 2 - Stage Combat -learning unarmed combat moves, choreographing a fight scene.



Summer 1 - Hairspray - Studying a routine from the Musical, learning about the Civil Rights Movement.



Spring 2 - Physical Theatre Focusing on practitioners Frantic Assembly and Gecko and their signature features.

8

Summer 2 - Matilda cont'd - Choreography



Autumn 1 & 2 - Street Dance covering Commercial, Break Dance and Hip Hop

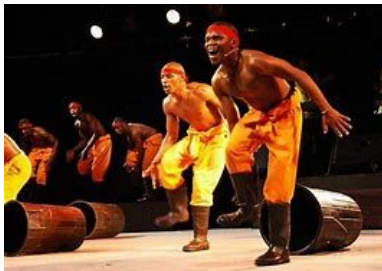


Summer 1 - Musical Theatre - Focusing on sections of Mary Poppins. Acting through song.



Spring 1 - Development of Theatre (Elizabethan) Shakespeare focus.

9



Autumn 1 & 2 - World Dance. Exploring Gumbo, African Dance and Bhangra.

Spring 1 - Working with a script - using DNA by Dennis Kelly

Spring 2 - Devising using a given stimulus

Summer 1 - Theatre in Education (T.I.E) Creating performances for a target audience.

Summer 2 - Production Skills /Technical Theatre (lighting/sound/make up focus Students explore the different roles and responsibilities.

Drama Key Stage 4 Road Map

Autumn - Devising
(Component 1)

10



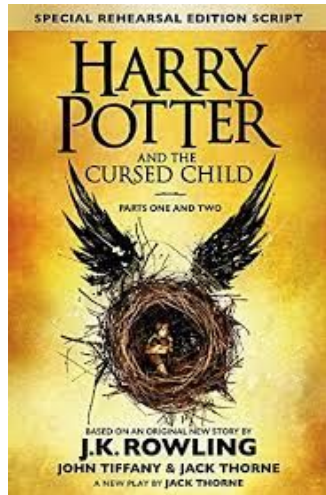
Spring & Summer -Devising continued and prep for Component 3
- written paper - Blood Brothers and live performance evaluation - The Woman in Black.



11

Autumn: Finish Devising - Comp 1 - performance and portfolio

Spring and Summer - Comp 2 (Presenting and Performing Texts) and Component 3 (Performance and Response). (Performance and response introduction to text -Chalk Farm). Work on monologues and duologues.



Two year Key Stage 4

Performing Arts Key Stage 4 Road Map

Autumn 1 & 2- Students learn about the different types of performance, What is performance and why do performances take place? They think about roles and responsibilities and decide which path they wish to focus on - Musical Theatre / Dancing/ Singing /Acting

10

Spring & Summer: Comp 1- Exploring the performing Arts. This is a theory based unit in which students study a production and create a portfolio. This is linked to a brief.

Comp 2 - Developing skills and techniques in the Performing Arts. This is a practical unit. Students will take part in workshops and will use the skills they have developed to perform extracts from a musical in their chosen discipline.. This is also linked to a brief.



11

Autumn - Summer - Students will spend their final year working on component 3 'Responding to a brief'. Learners will be given the opportunity to work as part of a group to contribute to a workshop performance as either a performer or a designer in response to a brief and stimulus.



Two year Key Stage 4

Performing Arts Key Stage 5 Road Map

Autumn - Spring 1: Unit 1 - Prepare to work in the Performing Arts Sector. Students complete a written response to a job advertisement, do a pitch to camera and an audition piece.

Autumn - Spring 1: Unit 3 - Influential Performance Practice. Students complete a written statement and two contrasting practical pieces in response to a statement.



12/13

Autumn - Summer: Dancing, Singing and Acting & Production Techniques. Students gather evidence and complete course work. Students take part in the Christmas show and all other performance opportunities to gather evidence of skill/ technique progression. Students Choose and compete various units depending on their chosen pathway. These are internally marked and then externally moderated.



12/13

Autumn - Spring 1: Unit 2 - Proposal for a Commissioning Brief. Students complete a written response to a brief.

Summer - Unit 32: Arts Administration- This is a written paper sat at the end of May.



The course works on a rotation. This road map shows the external units completed 2024 -2025. Students study pathway specific internal units throughout the duration of the entire course.