



**Gesture** is the word used to describe a non-verbal expressive movement of the body or an action which shows a feeling. An example is a hand wave or poking out your tongue. Gestures include movement of the Hands, face or other parts of the body.



**Body language** is communication by movement or proxemics (position). Age, gender, culture and social status can be shown through body language.

**Gesture and facial expression are forms of body language.**

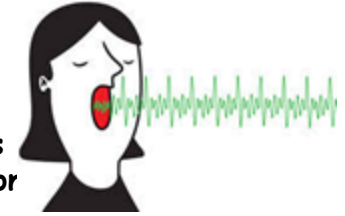


The 5 Key skills/knowledge for this unit.



**Voice.** To portray a character, you need to consider the vocal qualities you want that character to have. There are eight different elements of the voice:

- Pitch
- Pace
- Pause
- Tone
- Volume
- Accent
- Emphasis
- Intonation



**Characterisation:** When an actor uses their skills to portray a character and get 'in to role'. Key elements of characterisation are **voice, body language, movement** and **gesture**. Actors adapt these elements to take on a character.

**Root Word: Gesture**

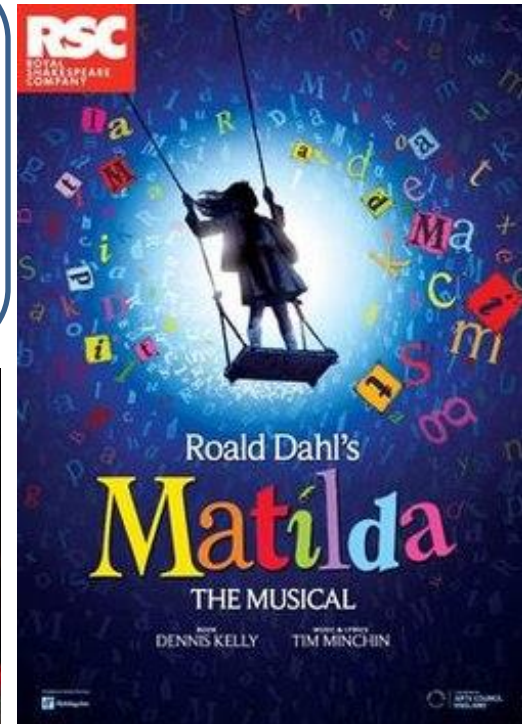
**Facial expression** is so important. An audience will look at body language for clues about a character, they do not just listen to the dialogue. Facial expression can reveal emotions and moods and can also tell us more about the situation. It can also reveal a **sub-text** (you will learn about this in Year 8.)

# Matilda The Musical

Matilda the Musical is based on the 1988 children's novel, which was written by Roald Dahl and illustrated by Quentin Blake. *Matilda* was made in to a film in 1996. It was then adapted for stage by Dennis Kelly with music and lyrics by Tim Minchin. It is now a successful production, staged by the Royal Shakespeare Company (RSC).

## Tim Minchin

Tim Minchin was born in 1975 in the UK, but was raised in Australia. He is predominantly a comedian but is also a composer-lyricist, musician and actor. Another Musical he co-wrote was 'Groundhog Day the Musical' with Danny Rubin. [www.timminchin.com](http://www.timminchin.com)



## Vocal element definitions:

- **Pitch** - How high or low a voice is.
- **Pace** - How fast or slow someone speaks
- **Pause** - Pauses are breaks. They can come at the end of a sentence or when you want the audience to digest what they have heard.
- **Tone** - The **WAY** a person speaks. Tone can show personality, sarcasm, happiness and more.
- **Volume** - How loud or softly someone speaks.
- **Accent** - The way words are pronounced.
- **Emphasis** - The stress or pressure put on certain words to make them stand out.
- **Intonation** - The way someone's voice rises and falls as they speak. It is when the pitch and tone both change.

## ASSESSMENT

For your end of unit assessment, you will be required to complete two tasks:

1. An end of unit written test.
2. A performance assessment of your chosen scripted scene.