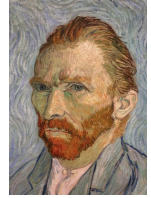


# YEAR 7 ART PORTRAITS & PROPORTION

## PORTRAIT

“Portrait” - a picture, photo, drawing or sculpture of a person - usually the head and shoulders.



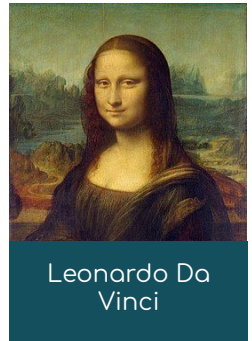
## REALISM

Artists may choose to create portraits that are very realistic and try to show exactly what someone looks like, or they may create a piece of artwork which is more expressive and try to represent an emotion

## PROPORTION

“Proportion” describes the relative sizes of different objects. Whenever you compare the sizes of things, you are dealing with proportions.

The correct proportions in a portrait are important if you want it to look realistic.

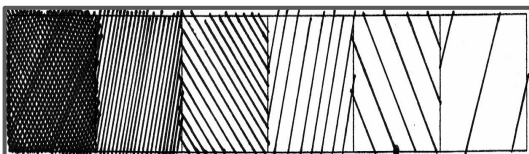
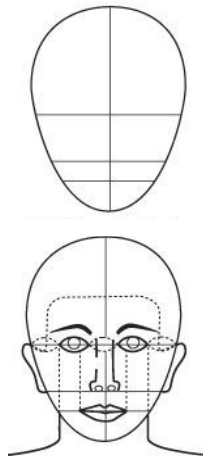


## THE RULE OF HALVES

A guide for helping you to create portraits with realistic proportions.

The Rule of Halves will not fit every face exactly, but it does help you to get the eyes, nose and mouth in the correct place on the head.

- Halfway between the top of the head and the bottom of the chin:
- Halfway between the eyes and the bottom of the chin:
- Halfway between the nose and the bottom of the chin:



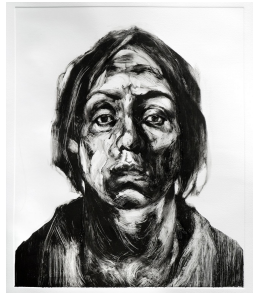
**Mark-Making** is the marks we use to add texture and tone to a drawing. **Hatching** describes the parallel lines drawn to create texture and tone.



**Tone** is the quality of light and dark in an image. It helps objects look realistic.

# MONOPRINTING

**MONOPRINT:** A process used to create a single, individual and unique print. Most printmaking methods make it possible to repeat a design over and over. Monoprinting does not allow this.



# COLLAGE

A collage is a piece of art made by sticking various different materials such as photographs and pieces of paper or fabric on to a backing.



# FROTTAGE/ RUBBINGS

Frottage art is when an artist rubs a pencil or crayon over a textured surface to make a pattern.



COLOUR	BLUE	GREEN	PURPLE
<b>PSYCHOLOGY</b>	PEACE - CALM TRUST CONFIDENCE LOYALTY	HEALTH TRANQUILITY GROWTH GENEROSITY	LUXURY POWER AMBITION CREATIVITY
<b>RED</b>	<b>PINK</b>	<b>ORANGE</b>	<b>YELLOW</b>
PASSION EXCITEMENT ENERGY CONFIDENCE	LOVE KINDNESS INNOCENCE FEMININITY	SUCCESS ENTHUSIASM WARMTH DETERMINATION	HOPE OPTIMISM POSITIVITY JOY
<b>GREY</b>	<b>BROWN</b>	<b>BLACK</b>	<b>WHITE</b>
ELEGANCE AUTHORITY KNOWLEDGE DIGNITY	NATURE SECURITY STRENGTH DEPENDABILITY	POWER FORMALITY REBELLION MYSTERY	PURITY SAFETY KNOWLEDGE GOODNESS

Analogous colours are NEXT to each other on the colour wheel. They blend together and are harmonious. Colours are associated with emotions. Artists use this in their work to create a mood.

Jenny Saville

